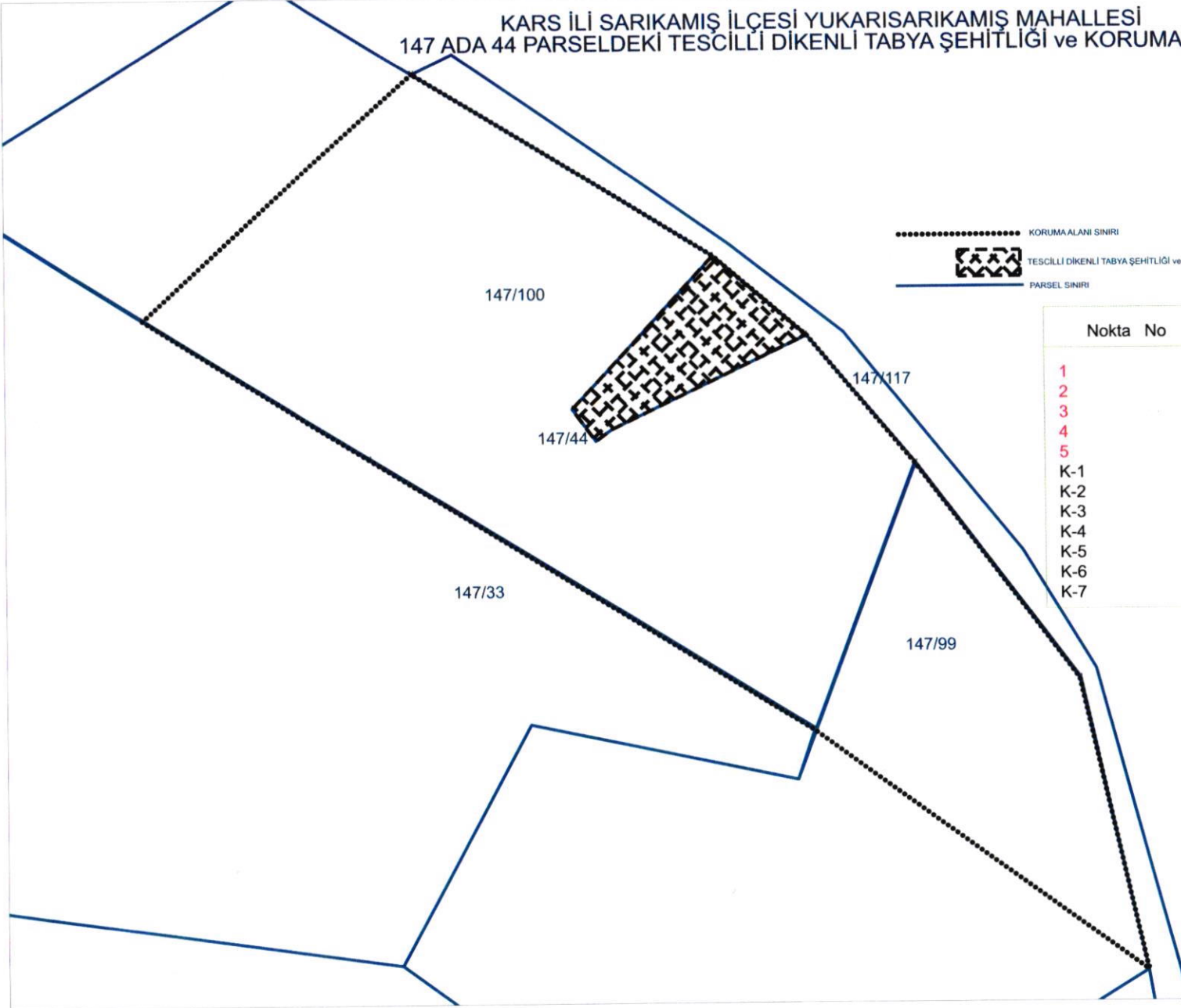


KARS İLİ SARIKAMIŞ İLÇESİ YUKARISARIKAMIŞ MAHALLESİ
147 ADA 44 PARSELDEKİ TESCİLLİ DİKENLİ TABYA ŞEHİTLİĞİ ve KORUMA ALANI



..... KORUMA ALANI SINIRI
[Hatched Area] TESCİLLİ DİKENLİ TABYA ŞEHİTLİĞİ ve PARSELI
—— PARSEL SINIRI

Nokta No	Y	X
1	544640.568	4468560.404
2	544605.178	4468522.271
3	544610.986	4468514.208
4	544614.990	4468517.136
5	544663.649	4468540.429
K-1	544566.338	4468606.677
K-2	544497.814	4468545.365
K-3	544554.411	4468509.994
K-4	544664.419	4468441.242
K-5	544747.194	4468380.658
K-6	544730.616	4468453.850
K-7	544690.361	4468508.024

ED-50_3_42

KARS K.V.K.B.K.'nun 28.10.2022

Tarih ve 3674 sayılı karar ekidir.



Gökhan CAN
Harita Mühendisi