

63.11.1823

İLİ:ŞANLIURFA İLÇESİ:EYYÜBİYE MAH/AKGAMESCİT
ADI: HAMZAN TEPE NEOLİTİK YERLEŞMESİ
I.DERECE ARKEOLOJİK SİT ALANI
ÖLÇEK:1/5000

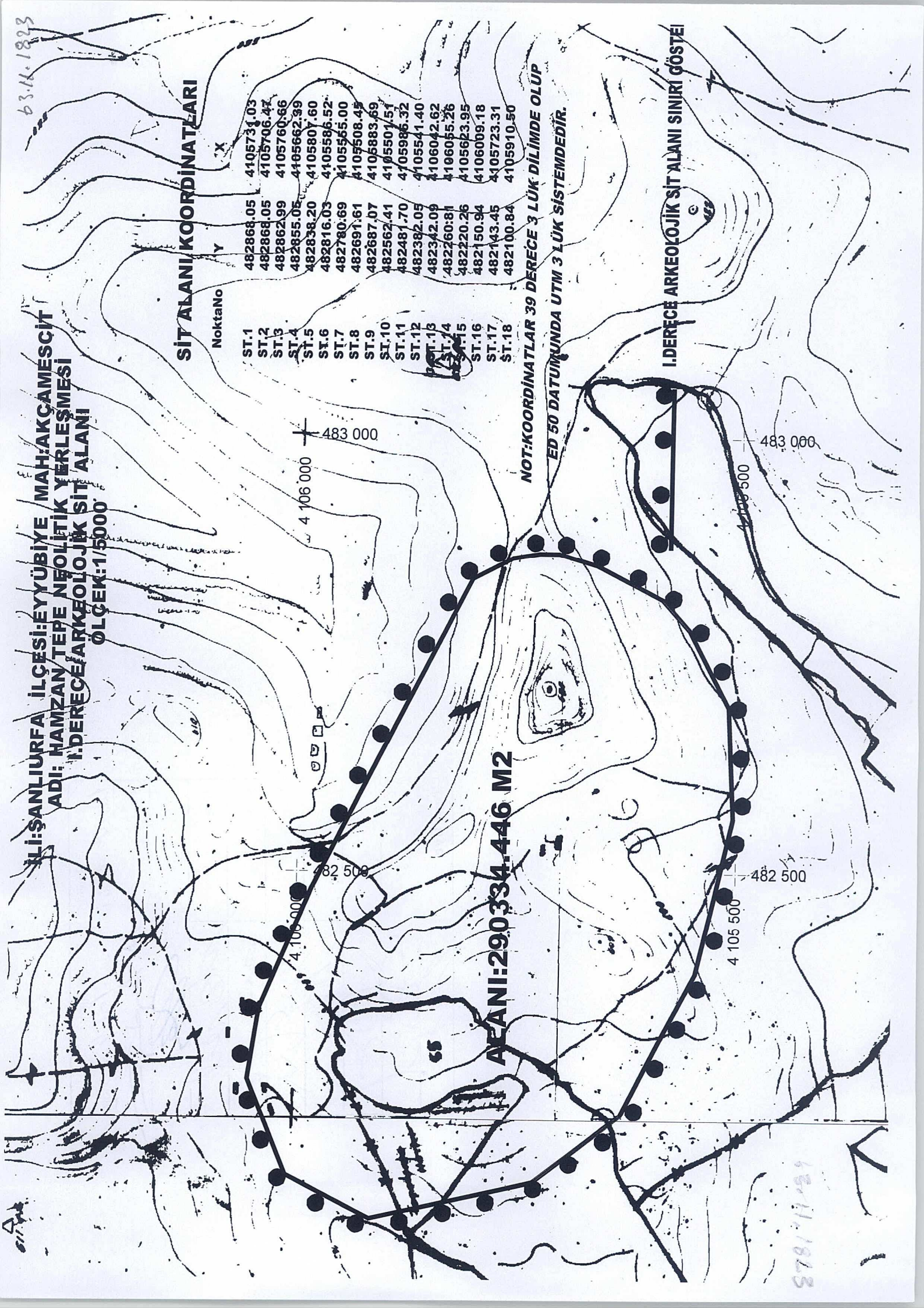
SİT ALANI KOORDİNATLARI

NoktaNo	Y	X
ST.1	482868.05	4105731.03
ST.2	482868.05	4105706.47
ST.3	482862.99	4105760.66
ST.4	482855.05	4105662.39
ST.5	482838.20	4105807.60
ST.6	482816.03	4105586.52
ST.7	482780.69	4105565.00
ST.8	482691.61	4105508.45
ST.9	482687.07	4105883.69
ST.10	482562.41	4105501.51
ST.11	482481.70	4105986.32
ST.12	482382.09	4105541.40
ST.13	482342.09	4106042.62
ST.14	482260.81	4106055.26
ST.15	482220.26	4105623.95
ST.16	482150.94	4106009.18
ST.17	482143.45	4105723.31
ST.18	482100.84	4105910.50

ALANI:290334.446 M2

**NOT:KOORDİNATLAR 39 DERECE 3 LÜK DİLİMDE OLUP
ED 50 DATUMUNDA UTM 3 LÜK SİSTEMDEDİR.**

I.DERECE ARKEOLOJİK SİT ALANI SINIRI GÖSTELİ



2781/11-21