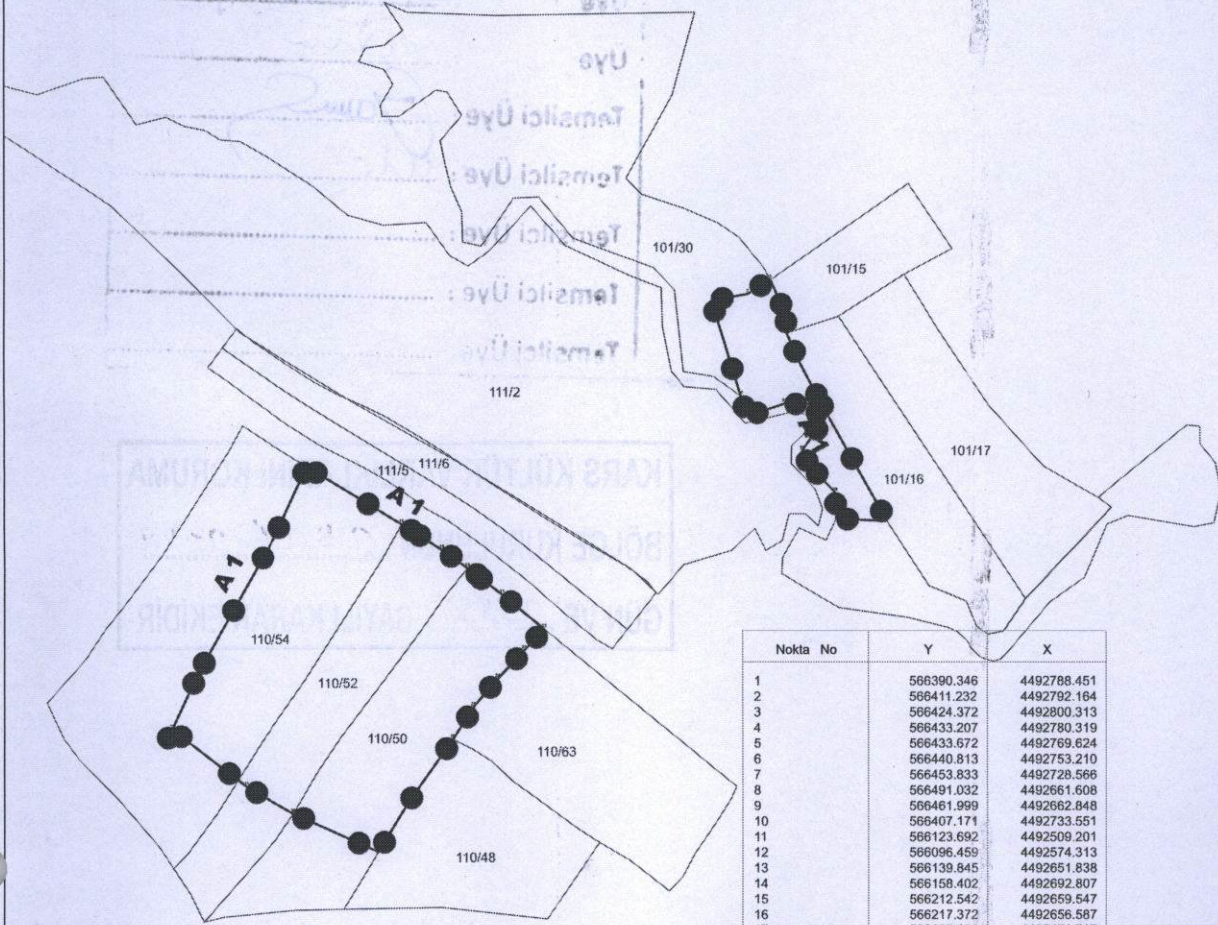


KARS İLİ SELİM İLÇESİ YASSICA KÖYÜNDEKİ  
TESCİLLİ YASSICA YAMAÇ YERLEŞİMİNİN 1.DERECE ARKEOLOJİK SİT SINIRI



Nokta No	Y	X
1	566390.346	4492788.451
2	566411.232	4492792.164
3	566424.372	4492800.313
4	566433.207	4492790.319
5	566433.672	4492769.624
6	566440.813	4492753.210
7	566453.833	4492728.566
8	566491.032	4492661.608
9	566461.999	4492662.848
10	566407.171	4492733.551
11	566123.692	4492509.201
12	566096.459	4492574.313
13	566139.845	4492651.838
14	566158.402	4492692.807
15	566212.542	4492659.547
16	566217.372	4492656.587
17	566199.186	4492471.717
18	566235.462	4492644.907
19	566250.112	4492634.507
20	566253.022	4492632.438
21	566270.012	4492619.198
22	566294.152	4492599.467
23	566282.608	4492587.146
24	566267.388	4492571.048
25	566253.399	4492554.700
26	566241.705	4492536.396
27	566216.132	4492499.858
28	566461.439	4492677.957
29	566446.611	4492693.624
30	566442.414	4492702.018
31	566454.724	4492719.644
32	566446.800	4492728.877
33	566432.310	4492729.070
34	566410.532	4492721.787
35	566081.195	4492541.963
36	566150.483	4492493.628

KARS K.V.K.B.K.'nun 28.06.2022

Tarih ve 3558 sayılı karar ekidir.



K. Zeynel Abidin YASLI Gökhan CAN  
Bölge Kurulu Müdürü Harita Mühendisi